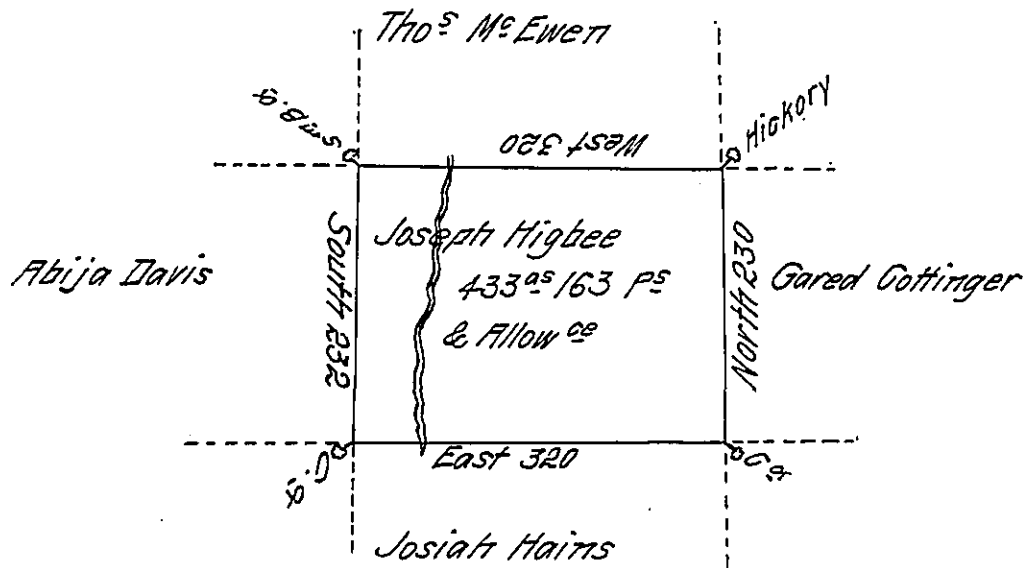


(Note this Survey is also Copied on Page 303 of this book)



Situate on the Waters of Marsh Creek Bald Eagle Township in the County  
 of Mifflin Surveyed on the 2<sup>nd</sup> day of Sept<sup>r</sup> 1794 for Joseph Higbee by Virtue of his  
 Warrant bearing date the 27<sup>th</sup> day of April 1793 Containing four hundred thirty  
 and three Acres & one hundred and Sixty three perches with the usual  
 Allowance.

To Daniel Brodhead Esq<sup>r</sup>  
 Surveyor General

Jo J Wallis D S

IN TESTIMONY that the above is a copy of the original remaining on file in  
 the Department of Internal Affairs of Pennsylvania, made  
 conformably to an Act of Assembly approved the 16th day of  
 February, 1833, I have hereunto set my Hand and caused  
 the Seal of said Department to be affixed at Harrisburg,  
 this eighth day of December 1910

*Henry Howell*  
 Secretary of Internal Affairs.